

Shifter Yokes, Shifter Shoes and Studs



For Models MMS, MMD,
MOR & ORI

THE MAXITORQ® ADVANTAGE

- Standard shifter assemblies for all sizes of mechanical multiple disc clutches and brakes
- Replacement shoes and studs
- Custom designs available

STANDARD SHIFTER YOKES

Carlyle Johnson's manual shifter yokes come complete with shoes and studs. Sizes 21 through 28 are available for MAXITORQ® Mechanical Clutches and Brakes.

A complete Shifter Yoke assembly is shown with a MAXITORQ® Multiple Disc Manual Double Clutch on the cover.

Carlyle Johnson manufactures a variety of parts and equipment for custom applications. If you wish to build your own clutches, we can supply self-contained MAXITORQ® Disc Pacs with patented separator springs that prevent drag, abrasion and the consequent heat build-up in neutral associated with conventional units.

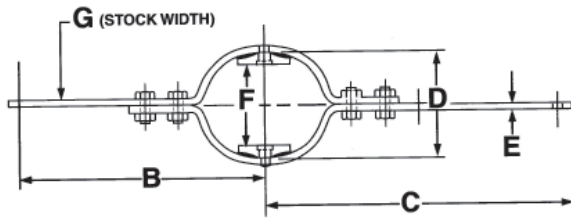
Special applications are welcomed. Carlyle Johnson designers and engineers are highly experienced in solving unique power transmission problems where space and weight are factors and high torque is a requirement.

Carlyle Johnson also supplies total transmission packages housings, clutches, brakes, gears, shafts and other transmission elements. Since the clutch or brake is usually the key element in these packages, Carlyle Johnson with single source responsibility is the logical choice for the total package.

SHOES AND STUDS

Shoes and studs are available separately in sizes 21 to 28 for installation into customer's shifter yokes.

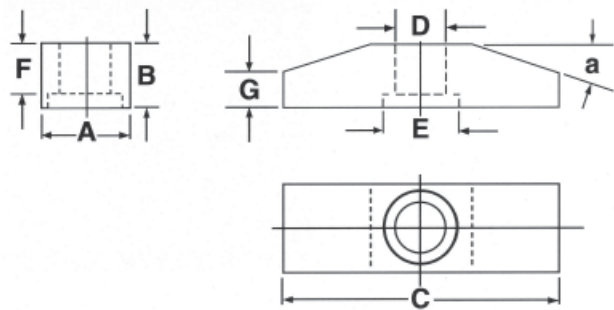
SHIFTER YOKE ASSEMBLY



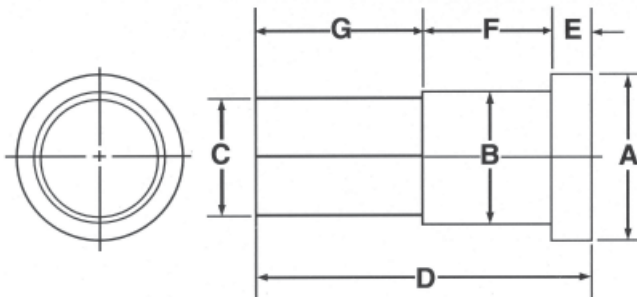
Model	B	C	D	E	F	G
MMS0021-150	7	7 3/8	2 27/32	3/16	2 7/32	3/4
MMS0022-150	8 7/8	9 3/8	3 5/16	1/4	2 11/16	1
MMS0023-150	10 1/2	11 1/8	4 5/16	5/16	3 11/32	1 1/4
MMS0024-150	10 1/2	11 1/8	4 1/2	5/16	3 21/32	1 1/4
MMS0025-150	10 1/2	16 1/4	5 5/16	3/8	4 1/8	1 1/2
MMS0026-150	10 1/2	17 1/4	6 13/16	3/8	4 3/4	1 3/4
MMS0027-150	11 7/8	20	8 3/4	1/2	6 9/16	2 1/4
MMS0028-150	11 7/8	20	8 3/4	1/2	7 9/16	2 1/4

Model	A	B	C	D	E	F	G	Angle a
MMS0021-117	.497	5/16	1 3/8	.313	13/32	.250	3/16	16°
MMS0022-117	.497	5/16	1 3/8	.313	13/32	.250	3/16	16°
MMS0023-117	.622	27/64	2	.375	17/32	.297	7/32	17°
MMS0024-117	.622	27/64	2	.375	17/32	.297	7/32	17°
MMS0025-117	.747	19/32	2 7/16	.438	5/8	.422	5/16	21°
MMS0026-117	.747	19/32	2 7/16	.438	5/8	.422	5/16	21°
MMS0027-117	.809	19/32	2 7/16	.438	5/8	.422	5/16	21°
MMS0028-117	.809	19/32	2 7/16	.438	5/8	.422	5/16	21°

SHIFTER SHOES



SHIFTER SHOE STUDS



Model	A	B	C	D	E	F	G
MMS0021-118	3/8	.311	.250	5/8	.046	.265	.312
MMS0022-118	3/8	.311	.250	5/8	.046	.265	.312
MMS0023-118	1/2	.373	.312	25/32	.094	.312	.375
MMS0024-118	1/2	.373	.312	25/32	.094	.312	.375
MMS0025-118	9/16	.436	.375	1 1/8	.125	.437	.563
MMS0026-118	9/16	.436	.375	1 1/8	.125	.437	.563
MMS0027-118	9/16	.436	.375	1 1/8	.125	.437	.563
MMS0028-118	9/16	.436	.375	1 1/8	.125	.437	.563



291 Boston Turnpike • P O Box 9546 • Bolton, Connecticut 06043-9546
 (860) 643-1531 • FAX (860) 646-2645 • TOLL FREE (888) 629-4867 • www.cjmco.com